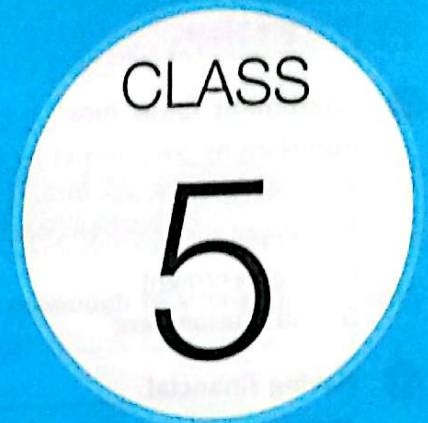
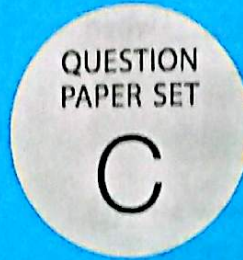


SOF INTERNATIONAL ENGLISH OLYMPIAD 2025-26



Total Questions : 50

Time : 1 hr.

Guidelines for the Candidate

- 1. You will get additional ten minutes to fill up information about yourself on the OMR Sheet, before the start of the exam.
2. Write your Name, School Code, Class, Section, Roll No. and Mobile Number clearly on the OMR Sheet and do not forget to sign it.
3. The Question Paper comprises four sections: Word and Structure Knowledge (30 Questions), Reading (10 Questions), Spoken and Written Expression (5 Questions) and Achievers Section (5 Questions).
4. All questions are compulsory. There is no negative marking.
5. There is only ONE correct answer. Choose only ONE option for an answer.
6. To mark your choice of answers by darkening the circles on the OMR Sheet, use HB Pencil or Blue / Black ball point pen only.
7. Return the OMR Sheet to the invigilator at the end of the exam.
8. Please fill in your personal details in the space provided before attempting the paper.

Q.10: Fill in the blank.

Please teach my dog _____ a ball.

- A. to fetch B. learn C. show D. to learn

As the correct answer is option A, you must darken the circle corresponding to option A on the OMR Sheet.



Name:.....
SOF Olympiad Roll No.:..... Contact No.:.....

DO NOT OPEN THIS BOOKLET UNTIL ASKED TO DO SO

THE WORLD'S BIGGEST OLYMPIADS | 27 Years of Trust | 99,499+ Schools | 72 Countries | 8.1+ Crores Assessments | 8 Olympiads

For questions 1 to 20, choose the correct option to fill in the blank.

- 1 Excitement fades into _____ when expectations are not met by reality.
A. fulfillment
B. impairment
C. contentment
D. disillusionment
- 2 Having financial _____ gave her the confidence to pursue her dreams.
A. codependence
B. independence
C. interdependence
D. attendance
- 3 And eventually, _____ in life, whether it's your success or personal growth, comes down to your behaviour.
A. nobody
B. something
C. everything
D. someone
- 4 After a year of training, the dog learnt to wipe _____ without assistance after meals.
A. themselves
B. herself
C. itself
D. yourself
- 5 Your presentation on the academic analysis of students _____ excellent.
A. been
B. was
C. are
D. were
- 6 Matilda was so dedicated to her fitness goals that she _____ to her workplace every day.
A. mopped
B. lodged
C. logged
D. strode
- 7 I can't believe he screamed _____ that even the thief got shocked.
A. so loudly
B. how quickly
C. too louder
D. very hardly
- 8 For the science project, Reva created a waste recycling machine, _____ I made a model showing how waste can be recycled.
A. in spite
B. meanwhile
C. instead
D. whether
- 9 I swear this is the _____ delicious uttapam I have ever tasted.
A. more
B. much
C. very
D. most
- 10 If you were given a choice, would you choose _____ ukulele, or _____ harmonium over there?
A. this, that
B. that, this
C. those, these
D. these, that
- 11 _____ sequoia tree is primarily found in _____ California's Sierra Nevada mountains.
A. A, a
B. A, the
C. The, no article
D. No article, the
- 12 _____ him to be the main culprit, the inspector shared his confidential details with the prosecutor.
A. Granting
B. Following
C. Provided
D. Assuming

13 _____ the ongoing chaos, we managed to help an injured man get to safety.

A. Amidst
B. Along
C. Upon
D. Across

14 We should _____ discuss this matter with the teacher _____ with the principal directly.

A. neither, or
B. either, or
C. only, also
D. rather, so

15 I met _____ my former boss _____ the mayor of our city at the function.

A. neither, or
B. both, but
C. not only, but also
D. rather, than

16 We were _____ to see the complete renovation of the school campus.

A. acceded
B. surprised
C. foreshadowed
D. presumed

17 Let's hope that the thunderstorm _____ stopped before we reach the island.

A. need have
B. have had
C. will have
D. has been

18 She's been _____ an invitation, but I don't want her to attend the wedding.

A. asking from
B. angling for
C. adding up
D. aiming of

19 The people in the apartment _____ mine play music the entire night.

A. above
B. about
C. on
D. within

20 Both of my sisters are _____, just like our father.

A. chips off the old block
B. nails on the head
C. wild goose chase
D. the dime a dozen

For questions 21 and 22, choose the correct option for the underlined word.

21 He was strong enough to survive in the wild, so I let him go.

A. Adverb
B. Gerund
C. Participle
D. Bare Infinitive

22 After a decade of struggle, the lady finally received the long due justice.

A. Material Noun
B. Countable Noun
C. Collective Noun
D. Uncountable Noun

For questions 23 and 24, choose the part of the sentence that has an error.

23 Than I cannot believe him after all that had happened, I still hope to build our trust.

A. Than I cannot
B. believe him after all
C. that had happened,
D. I still hope to build our trust.

24 I was treated nevertheless I were a member of the family.

A. I was treated nevertheless
B. I were a
C. member of
D. the family.

For questions 25 and 26, choose the correct synonym of the given word.

25 Extinguish

A. Ignite
B. Construct
C. Enflame
D. Quench

- 26 Inherent
- A. Acquired
 - B. External
 - C. Essential
 - D. Surface

For questions 27 and 28, choose the correct antonym of the given word.

- 27 Defiant
- A. Cheeky
 - B. Lippy
 - C. Mousy
 - D. Balky

- 28 Felicitous
- A. Successful
 - B. Propitious

- C. Destitute
- D. Progressed

For questions 29 and 30, choose the option with correct spelling.

- 29 How do you spell the word that means "the food of the gods"?
- A. Ambraesia
 - B. Ambraee
 - C. Abrosea
 - D. Ambrosia

- 30 How do you spell the word that means "a drinking cup or goblet"?
- A. Chalice
 - B. Caliche
 - C. Calais
 - D. Calamine

READING

For questions 31 to 35, read the passage and answer the questions that follow.

The quokka is a small macropod about the size of a domestic cat. It is the only member of the genus *Setonix*. Like other marsupials in the macropod family (such as kangaroos and wallabies), the quokka is herbivorous and mainly nocturnal. The quokka's range is a small area of Southwestern Australia. They inhabit some smaller islands off the coast of Western Australia, particularly Rottnest Island just off Perth and Bald Island near Albany. Isolated, scattered populations also exist in forest and coastal heath between Perth and Albany. A small colony inhabits a protected area of Two Peoples Bay Nature Reserve, where they co-exist with the critically endangered Gilbert's potoroo.

A quokka weighs 2.5 to 5.0 kg and is 40 to 54 cm (16 to 21 inch) long with a 25-30 cm long tail, which is quite short for a macropod. It has a stocky build, well developed hind legs,

rounded ears, and a short, broad head. Although looking rather like a very small kangaroo, it can climb small trees and shrubs up to 1.5 metres (4 ft 11 inch). Its coarse fur is a grizzled brown colour, fading to buff underneath. The quokka is known to live for an average of 10 years. Quokkas are nocturnal animals; they sleep during the day under the Prickle Lily bush, using the plants' spikes for protection and hiding. Female quokka gives birth to a single baby called a joey. Females can give birth twice a year and produce 17 joeys on average during their lifespan. The joey lives in its mother's pouch for six months. Once it leaves the pouch, the joey relies on its mother for milk for two more months and is fully weaned around eight months after birth. When a female quokka with a joey in her pouch is pursued by a predator, she may drop her baby onto the ground; the joey produces noises which may serve to attract the predator's attention, while the mother escapes.

The word "quokka" is originally derived from a Noongar (aboriginal language of the southwest region of Western Australia) word, which was probably gwaga.

Today, the Noongar people refer to them by either that name or another that has been variously rendered in English as 'ban-gup' or 'bungeup'. Like most macropods, quokkas eat many types of vegetation, including grasses, sedges and leaves. A study found that *Guichenotia ledifolia*, a small shrub species of the family Malvaceae, is one of the quokka's favoured foods. Rottnest Island visitors are urged to never feed quokkas, in part because eating "human food" such as chips can cause dehydration and malnourishment, both of which are detrimental to the quokka's health. Despite the relative lack of fresh water on Rottnest Island, quokkas do have high water requirements, which they satisfy mostly through eating vegetation. On the mainland, quokkas only live in areas that have 600 mm (24 inch) or more rain per year. The quokkas chew their cud, similar to cows.

31 Choose the most appropriate synonym of the word "detrimental".

- A. Noxious
- B. Helpful
- C. Benignant
- D. Salutory

32 Quokkas coexist with the endangered _____ in Two Peoples Bay Nature Reserve.

- A. Kangaroos
- B. Joeys
- C. Gilbert's potoroo
- D. Wallabies

33 Select the option that lists the correct statements.

1. The word "quokka" is originally derived from a Noongar word, which was probably gwaga.
2. Quokkas inhabit some smaller islands off the coast of Western Australia.

3. A study found that *Guichenotia ledifolia*, a small shrub species is one of the quokka's favoured foods.
 4. Like other marsupials in the macropod family, quokkas are herbivore and mainly diurnal.
- A. 1, 2 and 3 only
 - B. 2, 3 and 4 only
 - C. 1 and 3 only
 - D. 2 and 4 only

34 What is the average life span of a quokka?

- A. 5 years
- B. More than 10 years
- C. 10 years
- D. Less than 8 years

35 Visitors of Rottnest Island are urged to not feed human food to quokkas as it causes _____ and _____.

- A. overhydration, malnutrition
- B. dehydration, malnourishment
- C. malfunction, dehydration
- D. dehydration, active nutrition

For questions 36 to 40, read the passage and answer the questions that follow.

Orchids are plants that belong to the family Orchidaceae, a diverse and widespread group of flowering plants with blooms that are often colourful and fragrant. Orchids are cosmopolitan plants that are found in almost every habitat on Earth except glaciers. The world's richest diversity of orchid subgroups and species is found in the tropics. Orchidaceae is one of the two largest families of flowering plants, along with the aster, daisy, or sunflower family. It contains about 28,000 currently accepted species in 702 categories.

The Orchidaceae family encompasses about 6-11% of all species of seed plants. The largest divisions are *Bulbophyllum* (2,000 species), *Epidendrum* (1,500 species), *Dendrobium* (1,400 species) and *Pleurothallis* (1,000

species). It also includes Vanilla (the category of the vanilla plant), a type of Orchid, and many commonly cultivated plants such as Phalaenopsis and Cattleya. Moreover, since the introduction of tropical species into cultivation in the 19th century, horticulturists have produced many hybrids and cultivars.

Orchids are easily distinguished from other plants, as they share some derived characteristics or synapomorphies. Among these are bilateral symmetry of the flower (zygomorphism), many resupinate flowers, a nearly always highly modified petal (labellum), fused stamens and carpels, and extremely small seeds. Orchid flowers have three sepals, three petals, and a three-chambered ovary. The three sepals and two of the petals are often similar to each other, but one petal is usually highly modified, forming a "lip" or labellum. In most orchid genera, as the flower develops, it undergoes a twisting through 180°, called resupination, so that the labellum lies below the column. The labellum functions to attract insects, and in resupinate flowers, it also acts as a landing stage or sometimes a trap. The reproductive parts of an orchid flower are unique in that the stamens and style are joined to form a single structure, the column. Instead of being released singly, thousands of pollen grains are contained in one or two bundles called pollinia that are attached to a sticky disc near the top of the column. Just below the pollinia is a second, larger sticky plate called the stigma. Some orchids, such as Neottia and Corallorhiza, lack chlorophyll, so they are unable to photosynthesise. Instead, these species obtain energy and nutrients by parasitising soil fungi through the formation of orchid mycorrhizae.

36 Choose the correct antonym of the word "cosmopolitan".

- A. Slicker

- B. Naive
C. Cultured
D. Refined

37 Match the following and choose the correct option based on the information given in the passage.

- | Column I | Column II |
|-------------------------------------|-------------------|
| a. A larger sticky plate | (i) Vanilla |
| b. Bilateral symmetry of the flower | (ii) Zygomorphism |
| c. Phalaenopsis | (iii) 2,000 |
| d. Bulbophyllum | (iv) Stigma |
- A. a-(ii), b-(i), c-(iii), d-(iv)
B. a-(iv), b-(ii), c-(i), d-(iii)
C. a-(i), b-(ii), c-(iv), d-(iii)
D. a-(iv), b-(iii), c-(i), d-(ii)

38 Which of the following statements is correct in the context of Orchid sepals?

- A. Orchids have three sepals and two petals which are often similar and a modified labellum.
B. Orchid sepals are so unique that they join to form rows.
C. Orchid sepals and petals are dissimilar in number.
D. Orchid sepals function to attract insects and help in pollination.

39 What is resupination as per the passage?

- A. The 180° twisting of a developed orchid flower is called resupination.
B. It is a process by which orchids release thousands of pollen grains.
C. Resupination is a style that is adjoined to form a single structure.
D. Resupination cultivates plants such as Phalaenopsis and Cattleya.

40 Orchid species such as _____ and _____ lack chlorophyll, so are unable to photosynthesise.

- A. Epidendrum, Mycorrhizae
B. Cattleya, Phalaenopsis
C. Neottia, Corallorhiza
D. Dendrobium, Pleurothallis

SPOKEN AND WRITTEN EXPRESSION

For questions 41 to 45, choose the correct option to complete each conversation.

- 41 Melvin : I really need a break; I am so _____ from work.

Diana : I think you should clock out.

- A. stress out
- B. worn out
- C. burned in
- D. turned away

- 42 Kevin : It is because of you that the situation got worse.

Rita : You cannot always _____ to someone else.

- A. pass the buck
- B. walk over the horizon
- C. throw me over the bus
- D. give a cool shoulder

- 43 Teacher : By 2030, they _____ on quantum computing for over two decades.

Student : That's amazing!

- A. will have work
- B. will be working
- C. will have been working
- D. have worked

- 44 Joseph : I will quit my job before the _____ becomes public, and people start gossiping.

John : It's completely up to you.

- A. virtue
- B. scandal
- C. adulate
- D. obscene

- 45 Jimmy : Dad, what is Mr. Wilson doing in his garden?

Dad : He _____ the winter produce, my dear.

- A. harvest
- B. is harvesting
- C. is being harvested
- D. have harvested

ACHIEVERS SECTION

For questions 46 and 47, choose the correct option to fill in the blank.

- 46 Her _____ smile suggested that she considered herself too important to mingle with the rest of the guests.

- A. ebullience
- B. supercilious
- C. malleable
- D. rigorous

- 47 We've had past disagreements; _____, we should extend a hand of friendship.

- A. furthermore
- B. since
- C. nevertheless
- D. likewise

Choose the correct synonym of the given word.

- 48 Thwart

- A. Obviate

- B. Foster
- C. Abet
- D. Cultivate

Choose the correct antonym of the given word.

- 49 Squelch

- A. Throttle
- B. Quash
- C. Foment
- D. Vanquish

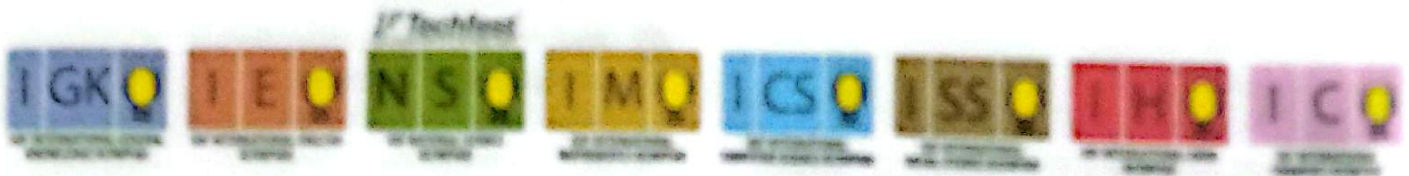
Choose the correct option to complete the conversation.


- 50 Rumi : I will go to the music festival _____ you accompany me or not.

Noor : Don't worry, I'll go _____ you like.

- A. however, either
- B. whether, wherever
- C. even though, everywhere
- D. whereas, neither





For latest updates & information, please like  our Facebook page (www.facebook.com/scfworld) or register on www.scfworld.org/subscribe-updates.html

For Level 1 and Level 2 preparation material / free sample papers, please log on to www.mtg.in



Head Office: Plot 99, Sector 44 Institutional area, Gurgaon- 122 002 (HR), India
Email: info@scfworld.org | Website: www.scfworld.org